

# On-Hold **Plus**™ 7500 *platinum series*

**For Use With Analog & KSU-less Phone Systems**

## MP3 Digital On-Hold Audio Player With Multi-Track CD Autoload

the  
**ULTIMATE**  
in On-Hold Audio!



Truly the ULTIMATE in on-hold audio, the OHP-7500 can literally handle almost anything you throw at it. Whether you have your on-hold messages on an audio CD, MP3 CD, SD memory card, or on your PC, this system can do it all. And, like all of our other systems, it's very easy to use!

The OHP-7500 works with virtually all analog and popular KSU-less phones. The 7500 also includes hold music activators that provide "true" hold button activation of your on-hold audio when connected to the handset cord of each phone.

## Features

- **Built-In Analog Phone Adapter Module** - Add music-on-hold to conventional analog and KSU-less telephones with up to 4 lines and 50 station sets. Works with all types of phones... even cordless.
- **Digital Flash Memory** - 128MB of on-board flash memory stores over 173 minutes (sampled at 98kbps) of awesome-sounding content. Additional Secure Digital card (not included) can add over 70 hours of content for continuous playback (1GB SD card).
- **Integrated CD Mechanism** - Quickly and easily record high quality audio from an Audio CD or MP3 CD. CD media is easy and inexpensive to duplicate and distribute.
- **CD Autoload** - Drop in a CD with a single track, close the lid, and the unit automatically records the content.
- **USB Connection** - Connect to your PC via USB to add new content or update firmware.
- **PC Connection...strictly optional** - Unit uses PC only to update content stored in flash memory. Updated content can optionally be added by copying an MP3 or WMA audio file to a Secure Digital (SD) card without the unit ever being connected to a PC or network.
- **Auto-start after Power Loss** - If power to the unit is lost, unit immediately returns to continuous playback with all settings without human intervention.
- **LCD Control Panel** - 6-line backlit LCD panel displays ID-3 tags with descriptive names of tracks for easy identification and selection. Display also shows a variety of important information so user can choose playback preferences and easily determine unit's operational status.
- **Built-In Monitor Speaker** - Allows user to monitor sound with the flip of a switch.
- **Wall Mountable** - Unit can be mounted, played and recorded in a vertical position.
- **HoldTracks™ Audio CD** - Choose new, royalty-free music from a prerecorded audio CD featuring a variety of music styles.
- **MessageStudio™ software** - Allows users to create new on-hold audio content, with voice, and music on their PC with a few mouse clicks. Then, just transfer the file directly to the unit's on-board memory, to an SD Card, or upload to a server for a network update.
- **Free personalization** - A free, professionally voiced, personalized on-hold production is provided to the customer automatically when a product is registered.



### Integrated Analog Phone Adapter Module

Built-in module allows the unit to provide on-hold audio capability to standard analog and KSU-less phone systems with up to four lines.

# On-Hold Plus™ 7500 platinum series

For Use With Analog & KSU-less Phone Systems

## Specifications

### ■ Controls

Play/Stop  
Select (up/down)  
Menu  
Volume (up/down)  
Repeat Mode (one/all/shuffle)

### ■ Display

Playback Mode (play/stop)  
Repeat Mode (one/all/shuffle)  
Volume Setting  
Internal Memory (on-board)  
External Memory (SD Card)  
ID3 Tag (track name 1 artist)  
Running time of track and total track length  
Track number playing and total number of tracks stored

### ■ Analog Phone Capability

Adds true "hold button" on-hold audio activation to ordinary analog and KSU-less phones

### ■ Jacks

USB (1.1)  
Audio Out (RCA)  
SD Card  
DC Power (12V)

### ■ Input

Integrated CD drive  
USB  
SD memory card slot

### ■ Output Power

8Ω - 4 volts peak-to-peak  
600Ω - 8 volts peak-to-peak

### ■ Power

12VDC @ 1000MA  
Source 110VAC, 60Hz UL/CSA power pack

### ■ Switches

Output impedance (8/600Ω)  
Speaker (on/off)

### ■ Memory Capacity

Internal - 128 MB  
External - Up to 1 GB (SD card)

### ■ Playback Capacity

Audio CD - 80 minutes  
MP3 CD - 480 minutes  
Internal memory - up to 128 MB (173 minutes sampled at 98kbps)  
SD Card - up to 1 GB (4000 minutes at 32 kbps @ 32K rate)

### ■ Formats Supported

Via Integrated CD Drive:

- Audio CD
- MP3 Encoded CD

Via USB or SD Card:

- MP3
- WMA

### ■ Internal Conversion Sampling Rate

32kbps @ 32K

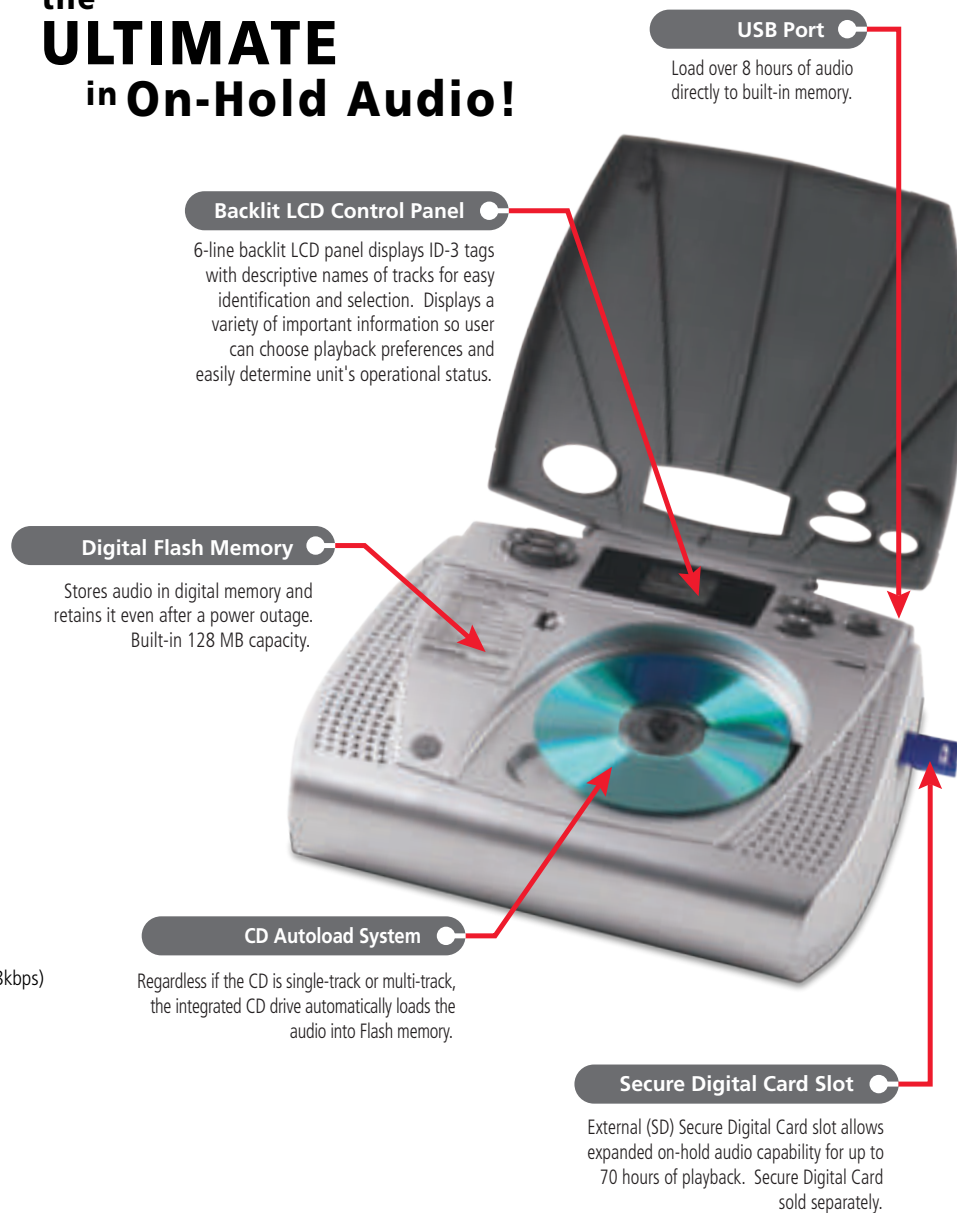
### ■ Physical

Size: 11 x 9" x 4.5" (LWD)  
Weight: 4.5 lbs.

### ■ Includes

Digital Player/Recorder  
MessageStudio™ Software  
HoldTracks™ Audio CD  
USB Cable  
AC Power Adapter  
2 Cordless Phone Adapters (male)  
2 Cordless Phone Adapters (female)  
2 TEHMAs  
2 Handset cords  
2 Phone Line Cords  
2 "T" Adapters

## the ULTIMATE in On-Hold Audio!



### Introducing TEHMA

In order to achieve true "hold button" activation, we created a small module called a TEHMA (telephone extension hold music activator). This line-powered activator sends a signal down the phone line telling the OHP-7500 unit whether or not the phone is on hold. Only phone extensions with a TEHMA can put a call on hold with the phone's hold button. Phones without a TEHMA can put a call on hold by pressing the star key twice and then pressing the phone's hold button.

